

4 Foxglove Close
Worlingham
Beccles
NR34 7BX



4 Foxglove Close

Guide Price £290,000

Quiet Village Living Close To The Broads & Coast..

Tucked away within a small cul-de-sac setting on the edge of the popular village of Worlingham, 4 Foxglove Close is a beautifully presented three-bedroom home offering generous living space, extensive parking and a wonderfully versatile layout, all within easy reach of Beccles, the Norfolk & Suffolk Broads and the Heritage Coast.

Occupying a peaceful position with only a handful of neighbouring properties, the home enjoys an attractive outlook across nearby green space and a children's play area, creating a wonderfully family-friendly feel. A substantial brickweave driveway provides parking for multiple vehicles, complemented further by an impressive covered carport and detached brick-built garage/workshop.

Inside, the property has a bright and welcoming feel throughout. The spacious sitting room enjoys a large front-facing window flooding the room with natural light, while the contemporary kitchen/breakfast room stretches across the rear of the house and offers excellent workspace, integrated appliances and ample room for informal dining. Underfloor heating adds comfort to both the lounge and kitchen areas, while French doors open directly onto the rear garden.

Upstairs, there are three well-proportioned bedrooms, including an exceptionally generous principal bedroom with elevated views across the surrounding area. The family bathroom has been stylishly updated with a modern suite, rainfall shower and contemporary tiling.

Outside, the rear garden has been thoughtfully arranged for entertaining and outdoor living, featuring an extensive patio, pergola seating area, composite decking and a brick-built barbecue and pizza oven. The garage offers excellent flexibility and could equally suit storage, hobbies or workshop use.

Worlingham remains one of the area's most sought-after villages thanks to its blend of countryside surroundings and convenience. Nearby Beccles offers an excellent range of independent shops, cafés, restaurants and supermarkets, together with schooling for all ages and a mainline railway station providing links to Norwich, Ipswich and London Liverpool Street. The beautiful Suffolk coastline, including Southwold and Aldeburgh, lies within easy driving distance, while the nearby Broads provide endless opportunities for walking, boating and outdoor pursuits.

A spacious and versatile home in an exceptionally convenient yet peaceful setting.

Agents notes...

A pre-recorded walkaround tour is available for this property

Local Authority

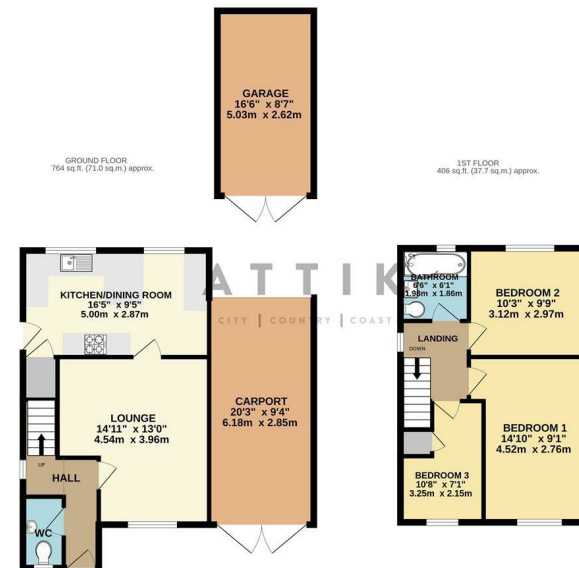
East Suffolk

Council Tax Band C

EPC Rating C



Contact
01502 820 028
enquiries@attikccc.co.uk
www.attikccc.co.uk



TOTAL FLOOR AREA: 1170 sq.ft. (108.7 sq.m.) approx.
We will make every effort to ensure the accuracy of the figures contained here. Measurements of floors, windows, rooms and any other items are approximate and no responsibility is taken for any error, omission or misstatement. This plan is for illustrative purposes only and should be used to assist the prospective purchaser. The services, systems and appliances shown have not been tested and no guarantee is given for their operation or efficiency on the date shown.
Mark with Heritage Circle